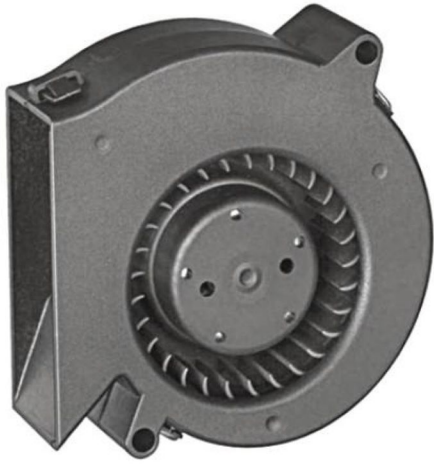


DC Blower Fan

76 x 76 x 27 mm

B7627 Series



Impeller : Made of GRP(PBT) UL94 V-0

風 輪: 玻璃增强热固性塑料PBT, 阻燃等级UL94 V-0

Volute : Made of GRP(PBT) UL94 V-0

蜗 壳: 玻璃增强热固性塑料PBT, 阻燃等级UL94 V-0

Motor : 4 Poles brushless DC motor

電 機: 4极无刷直流电机

Degree of protection : IP54

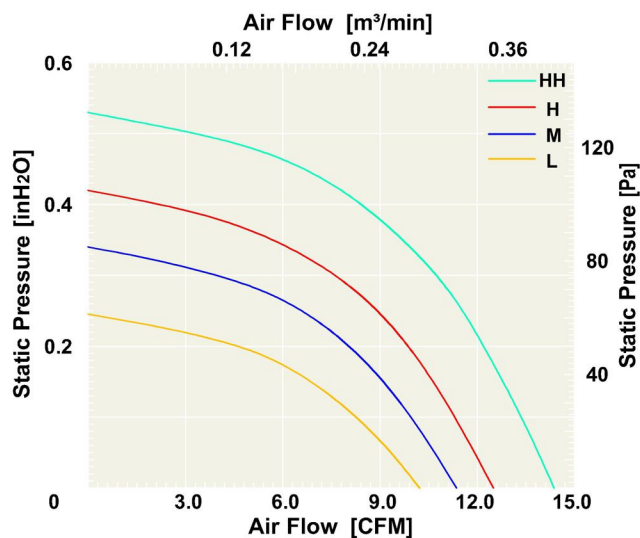
防护等级: IP54

Insulation class : B

绝缘等级: B

Model (型号)	Bearing System (轴承)	Rated Voltage (电压) [VDC]	Voltage Range (电压范围) [VDC]	Current (电流) [A]	Speed (转速) [RPM]	Maximum Air Flow (风量) [CFM]	Maximum Air Flow (风量) [m³/min]	Max. Static Pressure (静压) [inH ₂ O]	Max. Static Pressure (静压) [Pa]	Noise Level (噪音) [dB-A]	Mass (质量) [g]
B7627L12	B/S	12	6.0~13.5	0.13	3000	10.23	0.29	0.246	61.25	36	85
B7627L24	B/S	24	18.0~26.5	0.08	3000	10.23	0.29	0.246	61.25	36	85
B7627M12	B/S	12	6.0~13.5	0.22	3500	11.35	0.32	0.34	84.7	41.5	85
B7627M24	B/S	24	18.0~26.5	0.12	3500	11.35	0.32	0.34	84.7	41.5	85
B7627H12	B/S	12	6.0~13.5	0.28	4000	12.48	0.35	0.42	104.8	45.7	88
B7627H24	B/S	24	18.0~26.5	0.15	4000	12.48	0.35	0.42	104.8	45.7	88
B7627HH12	B/S	12	6.0~13.5	0.36	4500	14.63	0.41	0.53	132	48	88
B7627HH24	B/S	24	18.0~26.5	0.21	4500	14.63	0.41	0.53	132	48	88

Air Flow & Static Pressure Curve



Dimensions Drawing

